

↑
DIRECTION D'AIR
AIR FLOW

MODULE DE PUISSANCE / POWER MODULE: TYPE THYRISTORS
 RADIATEUR / HEATSINK: NO. 62905
 VENTILATEUR DE / THE FAN: TYPE 150 CFM
 SIGNAL D'ENTREE / INPUT SIGNAL: 3-32 VDC, 24VAC, 24VDC
 MODÈLE / MODEL: CCT 135-1
 COURANT / AMPERAGE: 135 A
 VOLTAGE: 208, 240, 277, 347, 480, AND 600 VAC, 1 PHASE
 PROTECTION SURCHAUFFAGE INTEGREE / INTEGRAL OVERHEAT PROTECTION
 (VOIR SCHEMA DE CONTROLE POUR LE BRANCHEMENT)
 (SEE CONTROL SCHEMATIC FOR CONTROL IDENTIFICATION)

L1=LIGNE / LINE
 T1=CHARGE / LOAD



1375 CHAREST BLD. #14
 QUEBEC, QC, CANADA
 G1N 2E7
 TEL: 1-800-681-9590
 FAX: 1-418-681-7393
www.cristalcontrols.com



CAN/CSA-C22.2 NO. 14-M95
 -APPAREILLAGE INDUSTRIEL DE COMMANDE
 UL Std No. 508
 -INDUSTRIAL CONTROL EQUIPMENT

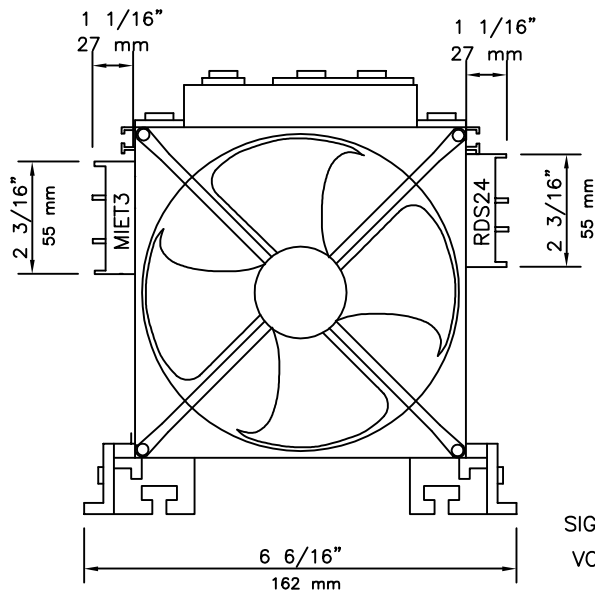
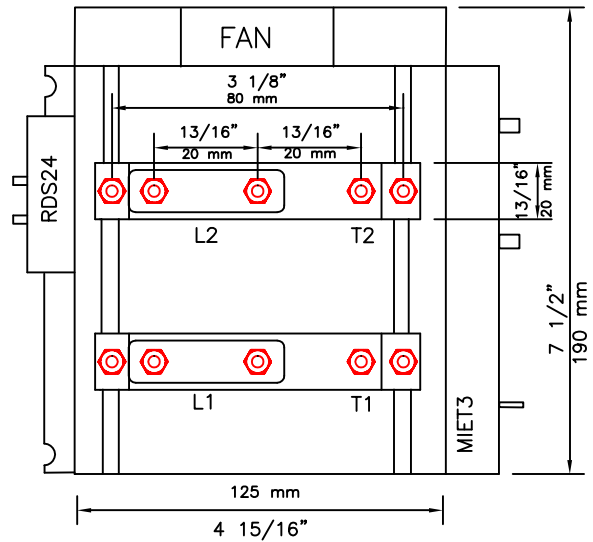
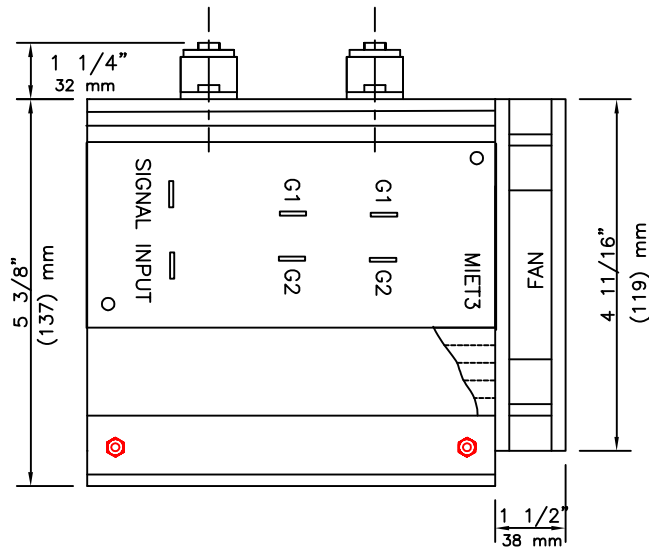
- PROPOSITION
- APPROVAL
- INFORMATION

DRAWING NAME :

CCT 135-1

DATE :

JAN 2004



↑
DIRECTION D'AIR
AIR FLOW

MODULE DE PUISSANCE / POWER MODULE: TYPE THYRISTORS
 RADIATEUR / HEATSINK NO. 62905
 VENTILATEUR DE / THE FAN: TYPE 150 CFM
 SIGNAL D'ENTREE / INPUT SIGNAL: 3-32 VDC, 24 VAC, 24 VDC
 VOLTAGE: 208, 240, 277, 347, 480 AND 600 VAC. 3 PHASES
 COURANT / AMPERAGE: 135A
 MODÈLE / MODEL: CCT 135-3
 PROTECTION SURCHAUFFAGE INTEGREE / INTEGRAL OVERHEAT PROTECTION
 (VOIR SCHEMA DE CONTROLE POUR LE BRANCHEMENT)
 (SEE CONTROL SCHEMATIC FOR CONTROL IDENTIFICATION)

L1=LIGNE / LINE
 T1=CHARGE / LOAD



1375 CHAREST BLD. #14
 QUEBEC, QC, CANADA
 G1N 2E7
 TEL: 1-800-681-9590
 FAX: 1-418-681-7393
www.cristalcontrols.com



C US
 CAN/CSA-C22.2 NO. 14-M95
 -APPAREILLAGE INDUSTRIEL DE COMMANDE
 UL Std No. 508
 -INDUSTRIAL CONTROL EQUIPMENT

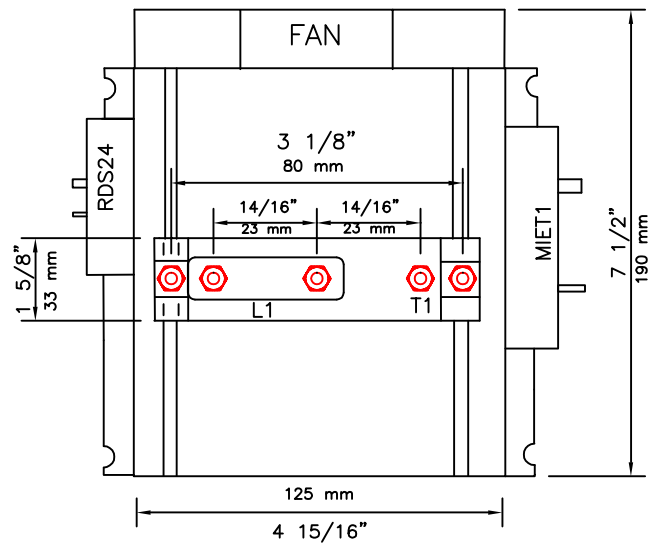
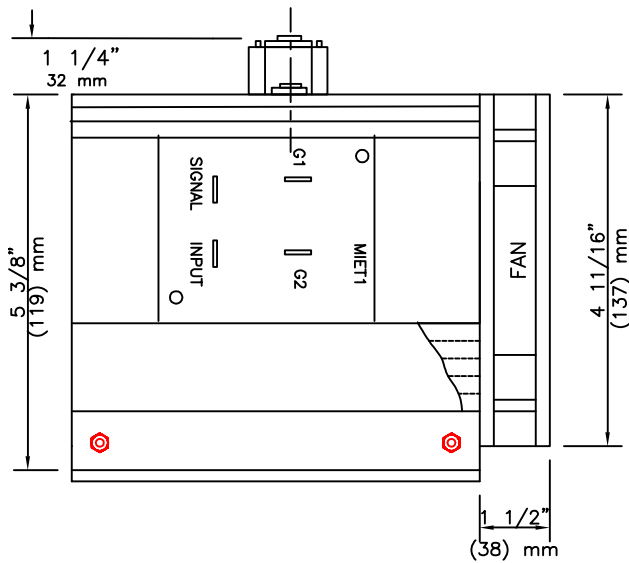
- PROPOSITION
- APPROVAL
- INFORMATION

DRAWING NAME :

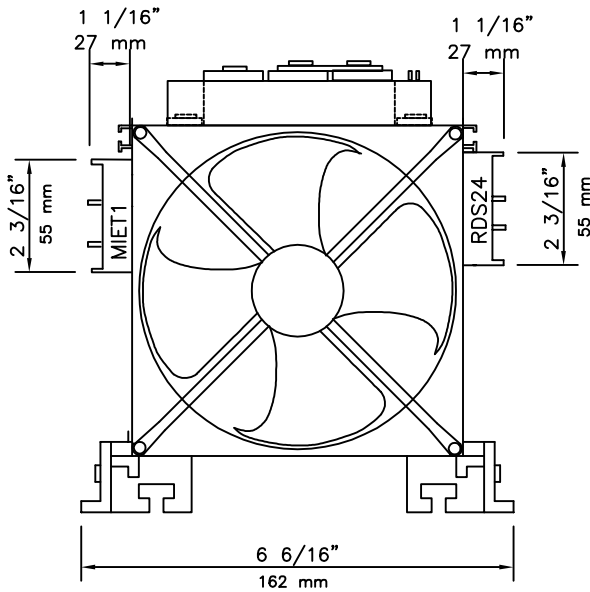
CCT 135-3

DATE :

JAN 2004



↑
DIRECTION D'AIR
AIR FLOW



MODULE DE PUISSANCE / POWER MODULE: TYPE THYRISTORS
 RADIATEUR / HEATSINK: NO. 62905
 VENTILATEUR DE / THE FAN: TYPE 150 CFM
 SIGNAL D'ENTREE / INPUT SIGNAL: 3-32 VDC, 24VAC, 24VDC
 MODÈLE / MODEL: CCT 165-1 ET/AND CCT 200-1
 COURANT / AMPERAGE: 165 A ET/AND 200A
 VOLTAGE: 208, 240, 277, 347, 480, AND 600 VAC, 1 PHASE
 PROTECTION SURCHAUFFAGE INTEGREE / INTEGRAL OVERHEAT PROTECTION
 (VOIR SCHEMA DE CONTROLE POUR LE BRANCHEMENT)
 (SEE CONTROL SCHEMATIC FOR CONTROL IDENTIFICATION)

L1=LIGNE / LINE
 T1=CHARGE / LOAD



1375 CHAREST BLD. #14
 QUEBEC, QC, CANADA
 G1N 2E7
 TEL: 1-800-681-9590
 FAX: 1-418-681-7393
www.cristalcontrols.com



C US
 CAN/CSA-C22.2 NO. 14-M95
 -APPAREILLAGE INDUSTRIEL DE COMMANDE
 UL Std No. 508
 -INDUSTRIAL CONTROL EQUIPMENT

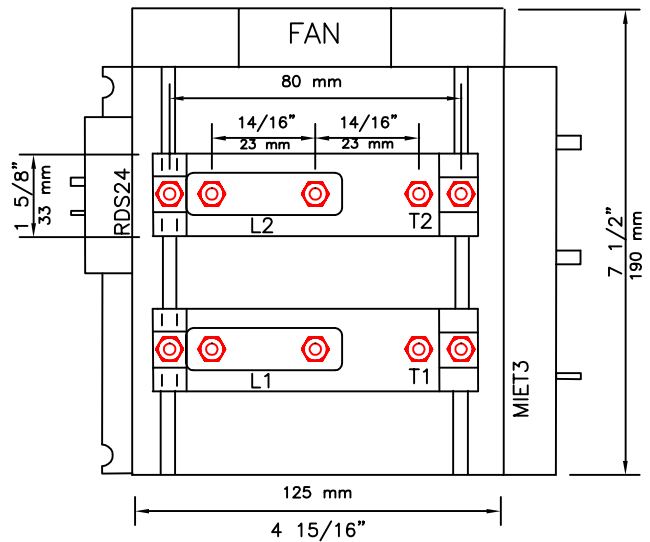
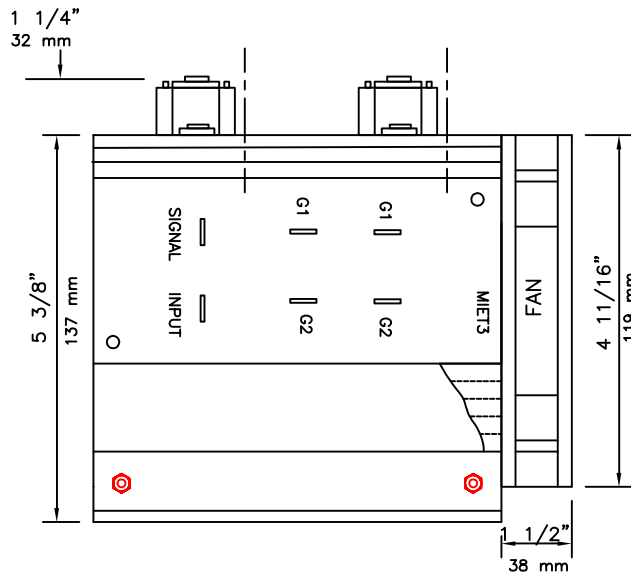
- PROPOSITION
- APPROVAL
- INFORMATION

DRAWING NAME :

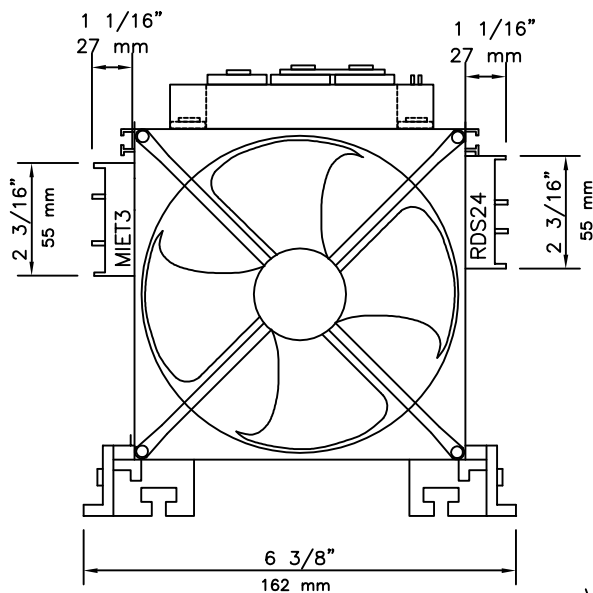
CCT-165-1

DATE :

JAN 2004



DIRECTION D'AIR
AIR FLOW



MODULE DE PUISSANCE / POWER MODULE: TYPE THYRSTORS
 VENTILATEUR DE / THE FAN: TYPE 150 CFM
 RADIATEUR / HEATSINK: NO. 62905
 SIGNAL D'ENTREE / INPUT SIGNAL: 3-32VDC, 24VAC, 24VDC
 MODÈLE / MODEL: CCT 165-3 ET/AND CCT 200-3
 COURANT / AMPERAGE: 165 A ET/AND 200A
 VOLTAGE: 208, 240, 277, 347, 480, AND 600 VAC, 3 PHASES
 PROTECTION SURCHAUFFAGE INTEGREE / INTEGRAL OVERHEAT PROTECTION
 (VOIR SCHEMA DE CONTROLE POUR LE BRANCHEMENT)
 (SEE CONTROL SCHEMATIC FOR CONTROL IDENTIFICATION)

L1=LIGNE / LINE
 T1=CHARGE / LOAD



1375 CHAREST BLD. #14
 QUEBEC, QC, CANADA
 G1N 2E7
 TEL: 1-800-681-9590
 FAX: 1-418-681-7393
www.cristalcontrols.com



C US
 CAN/CSA-C22.2 NO. 14-M95
 -APPAREILLAGE INDUSTRIEL DE COMMANDE
 UL Std No. 508
 -INDUSTRIAL CONTROL EQUIPMENT

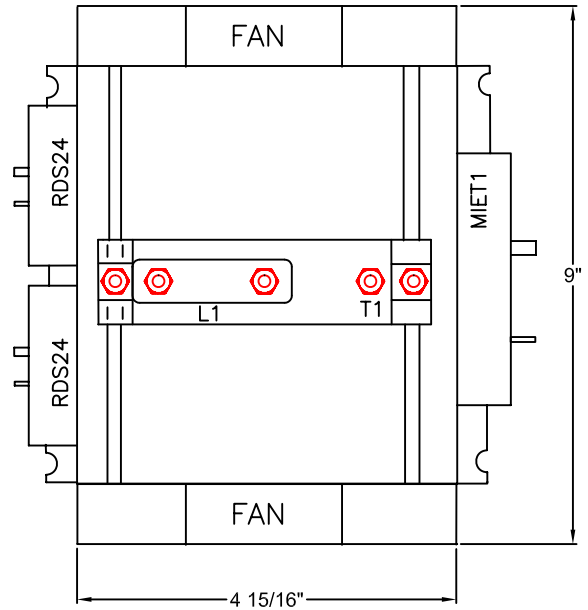
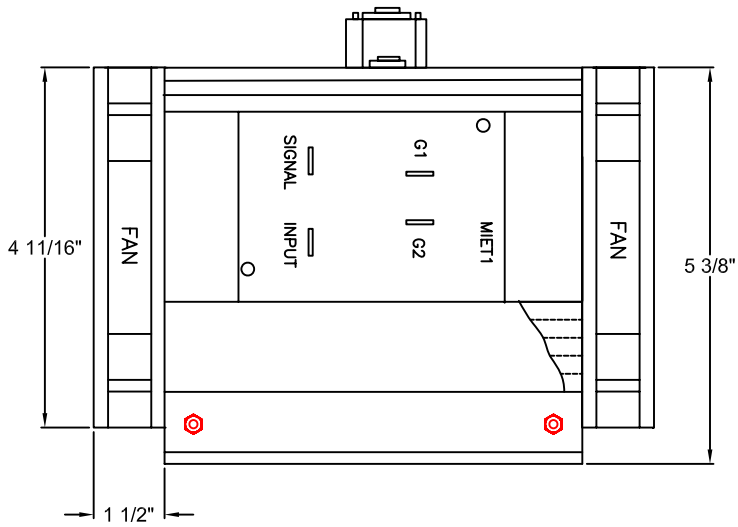
- PROPOSITION
- APPROVAL
- INFORMATION

DRAWING NAME :

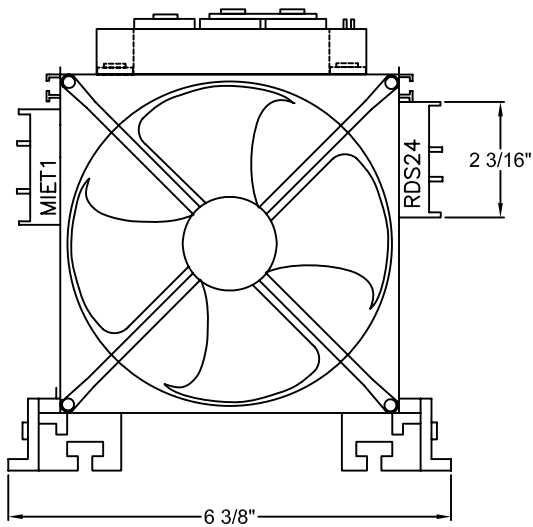
CCT 165-3
 CCT 200-3

DATE :

JAN 2004



↑
DIRECTION D'AIR
AIR FLOW



MODULE DE PUISSANCE / POWER MODULE: TYPE THYRISTOR

VENTILATEUR DE / THE FAN: TYPE 150 CFM

RADIATEUR / HEATSINK: NO. 62375

SIGNAL D'ENTRÉE / INPUT SIGNAL: 3-32VDC, 24VAC, 24VDC

MODÈLE / MODEL: CCT 250-1

COURANT / AMPERAGE: 250 A

VOLTAGE: 208, 240, 277, 347, 480, AND 600 VAC, 1 PHASE

PROTECTION SURCHAUFFAGE INTÉGRÉE / INTEGRAL OVERHEAT PROTECTION

(VOIR SCHÉMA DE CONTRÔLE POUR LE BRANCHEMENT)

(SEE CONTROL SCHEMATIC FOR CONTROL IDENTIFICATION)

L1 = LIGNE / LINE

T1 = CHARGE / LOAD

NOTE: NOUS RECOMMANDONS L'UTILISATION DE CONNECTEURS PAR COMPRESSION POUR LE BRANCHEMENT
WE RECOMMEND THE USE OF COMPRESSION LUGS FOR WIRING



1375 CHAREST BLD. #14
QUEBEC, QC, CANADA
G1N 2E7
TEL: 1-800-681-9590
FAX: 1-418-681-7393
www.cristalcontrols.com



CAN/CSA-C22.2 NO. 14-M95
-APPAREILLAGE INDUSTRIEL DE COMMANDE
UL Std No. 508
-INDUSTRIAL CONTROL EQUIPMENT

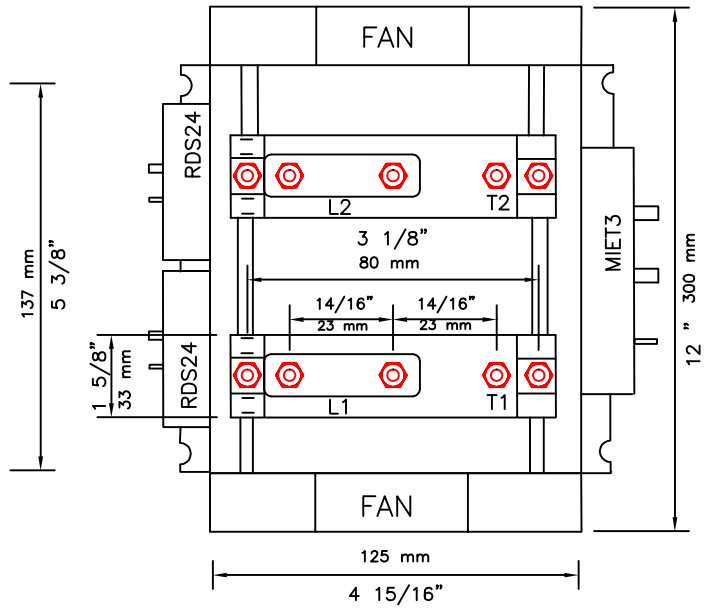
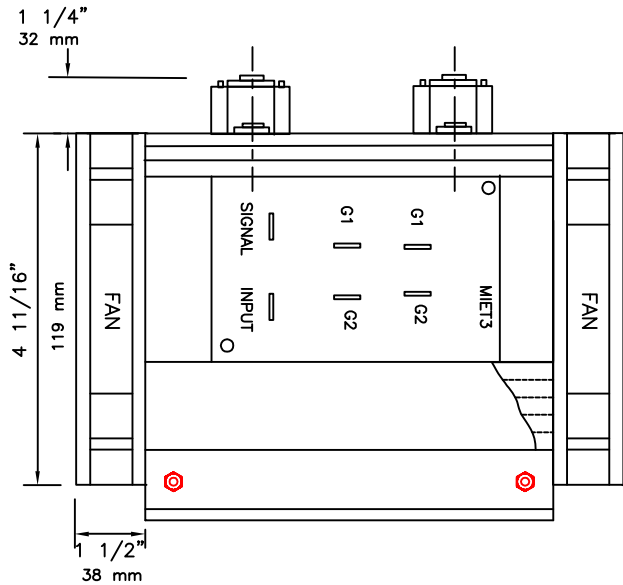
- PROPOSITION
- APPROVAL
- INFORMATION

DRAWING NAME :

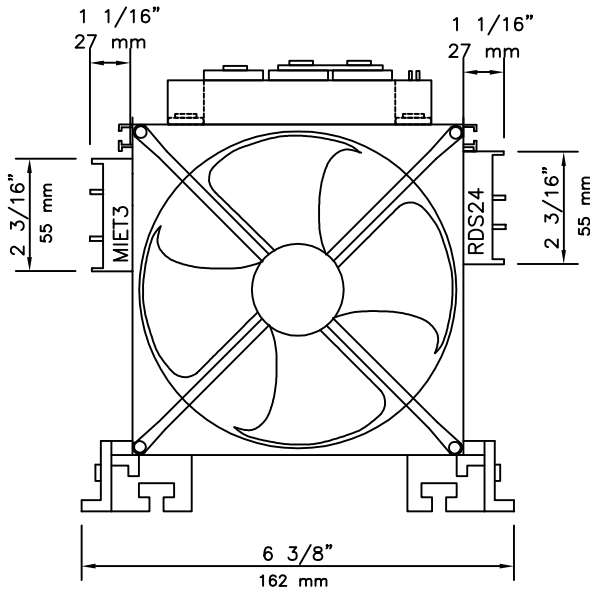
CCT 250-1

DATE :

JAN 2004



↑
DIRECTION D'AIR
AIR FLOW



MODULE DE PUISSANCE / POWER MODULE: TYPE THYRISTORS

VENTILATEUR DE / THE FAN: TYPE 150 CFM

RADIATEUR / HEATSINK: NO. 62375

SIGNAL D'ENTREE / INPUT SIGNAL: 3-32VDC, 24VAC, 24VDC

MODÈLE / MODEL: CCT 250-3

COURANT / AMPERAGE: 250 A

VOLTAGE: 208, 240, 277, 347, 480, AND 600 VAC, 3 PHASES

PROTECTION SURCHAUFFAGE INTEGREE / INTEGRAL OVERHEAT PROTECTION

(VOIR SCHEMA DE CONTROLE POUR LE BRANCHEMENT)

(SEE CONTROL SCHEMATIC FOR CONTROL IDENTIFICATION)



1375 CHAREST BLD. #14
QUEBEC, QC, CANADA
G1N 2E7
TEL: 1-800-681-9590
FAX: 1-418-681-7393
www.cristalcontrols.com



CAN/CSA-C22.2 NO. 14-M95
-APPAREILLAGE INDUSTRIEL DE COMMANDE
UL Std No. 508
-INDUSTRIAL CONTROL EQUIPMENT

- PROPOSITION
 APPROVAL
 INFORMATION

DRAWING NAME :

CCT 250-3

DATE :

JAN 2004